

- (1) H_2O
~ 2ml
- (2) 5ml CC1=CC=C(C=C1)C (Toluene)
- (3) 5 pellets KOH

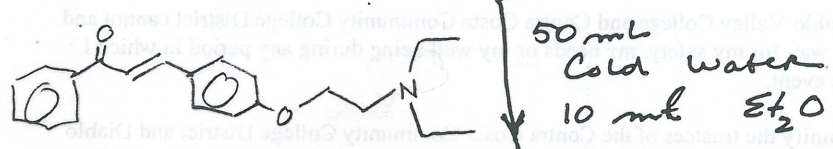
Toluene layer

RED Solid

+ \leftrightarrow DMSO

Heat 20 min boiling H_2O

Semi solid (white) on walls of tube



(TOP) **Et_2O**
SAVE

(BOTTOM) **AQ**

Et_2O

~~AQ (DISCARD)~~

2 x 10 ml H_2O

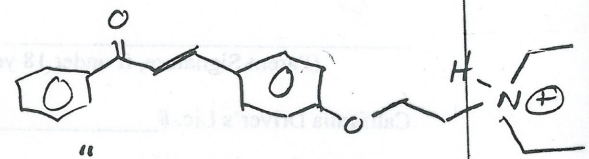
Et_2O

~~AQ (DISCARD)~~

2 x 1M HCl

~~Et_2O~~

AQ



"discard lower organic layers"

~~CH_2Cl_2~~

AQ

2 ml 60% KOH
CC1=CC=C(C=C1)C 2 x 5 ml

